
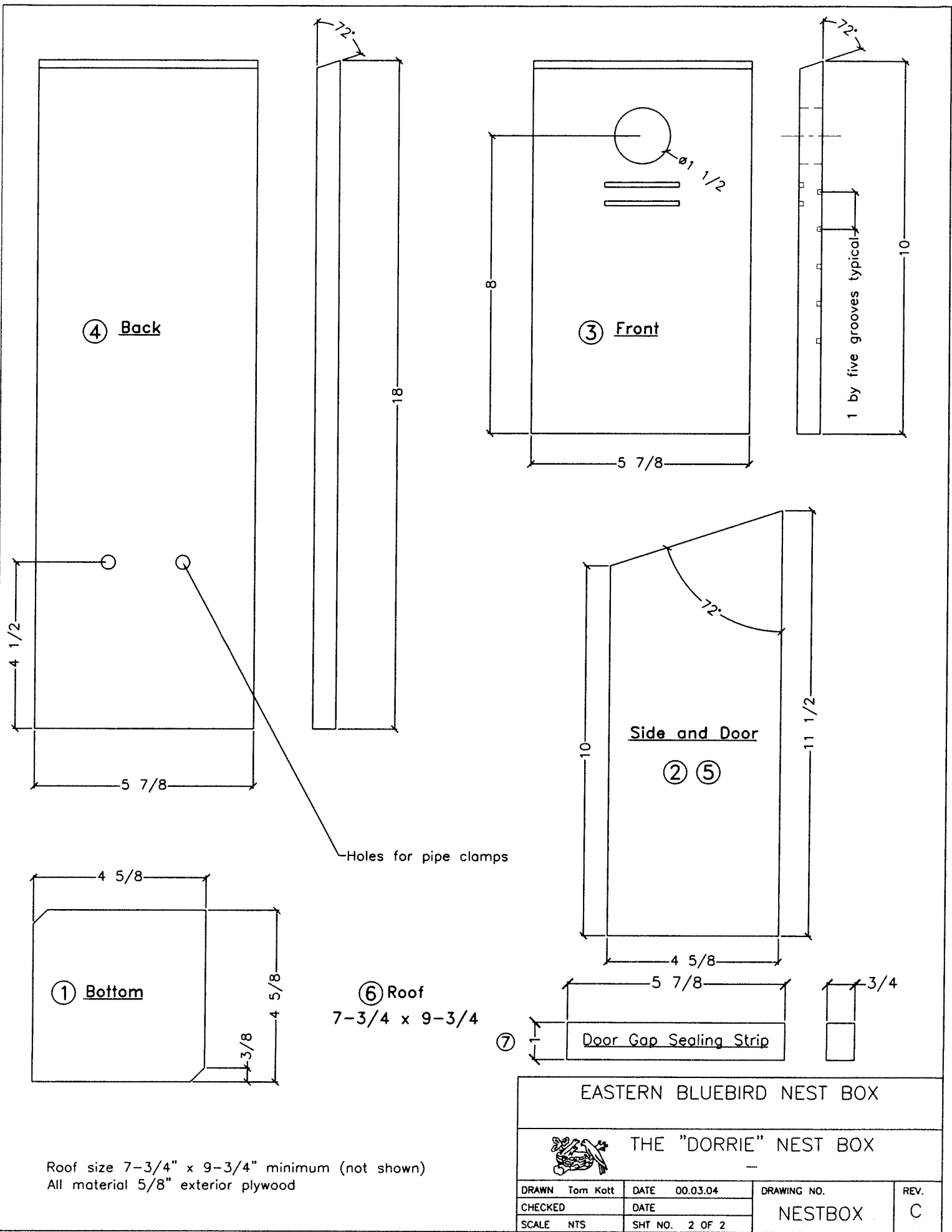


Notes:


- All material  $\frac{5}{8}$  exterior plywood
- Note location of grooves on part #3 (front)
- For more durability, glue and screw together
- Use #6x1- $\frac{1}{2}$  wood screws with exterior wood glue
- For door hinge pins use 1- $\frac{1}{2}$ " ardox nails
- Use sand paper to remove any rough edges on the entrance hole
- Paint outside of box with an exterior latex paint (brown or grey)
- Do not paint the interior of the box
- Parts numbered in order of assembly
- Use a #8 x 1- $\frac{1}{4}$  wood screw to lock box door
- Box must be mounted on steel pipe or T post with predator guard
- Entrance hole faces S-E (in Ontario)
- Entrance hole approximately 1.83m (6ft) from ground

Plans provided by:  
 Glanbrook Conservation Committee &  
 the Ontario Eastern Bluebird Society

EASTERN BLUEBIRD NEST BOX			
		THE "DORRIE" NEST BOX	
DRAWN Tom Kott	DATE 00.03.04	DRAWING NO.	REV.
CHECKED	DATE	NESTBOX	C
SCALE NTS	SHT NO. 1 OF 2		



Roof size 7-3/4" x 9-3/4" minimum (not shown)  
 All material 5/8" exterior plywood

EASTERN BLUEBIRD NEST BOX			
		THE "DORRIE" NEST BOX	
		—	
DRAWN	Tom Kott	DATE	00.03.04
CHECKED		DATE	
SCALE	NTS	SHT NO.	2 OF 2
DRAWING NO.			REV.
NESTBOX			C