

Notes:

- All material 5/8 exterior plywood
- Note location of grooves on part #3 (front)
- For more durability, glue and screw together
- Use #6x1-1/2 wood screws with exterior wood glue
- For door hinge pins use 1-1/2" ardox nails
- Use sand paper to remove any rough edges on the entrance hole
- Paint outside of box with an exterior latex paint (brown or grey)
- Do not paint the interior of the box
- Parts numbered in order of assembly
- Use a #8 x 1-1/4 wood screw to lock box door or the "Don Wills Latch" (see plans, sheet 3 of 3)
- Box must be mounted on steel pipe or T post with predator guard
- Entrance hole faces S-E (in Ontario)
- Entrance hole approximately 1.83m (6ft) from ground

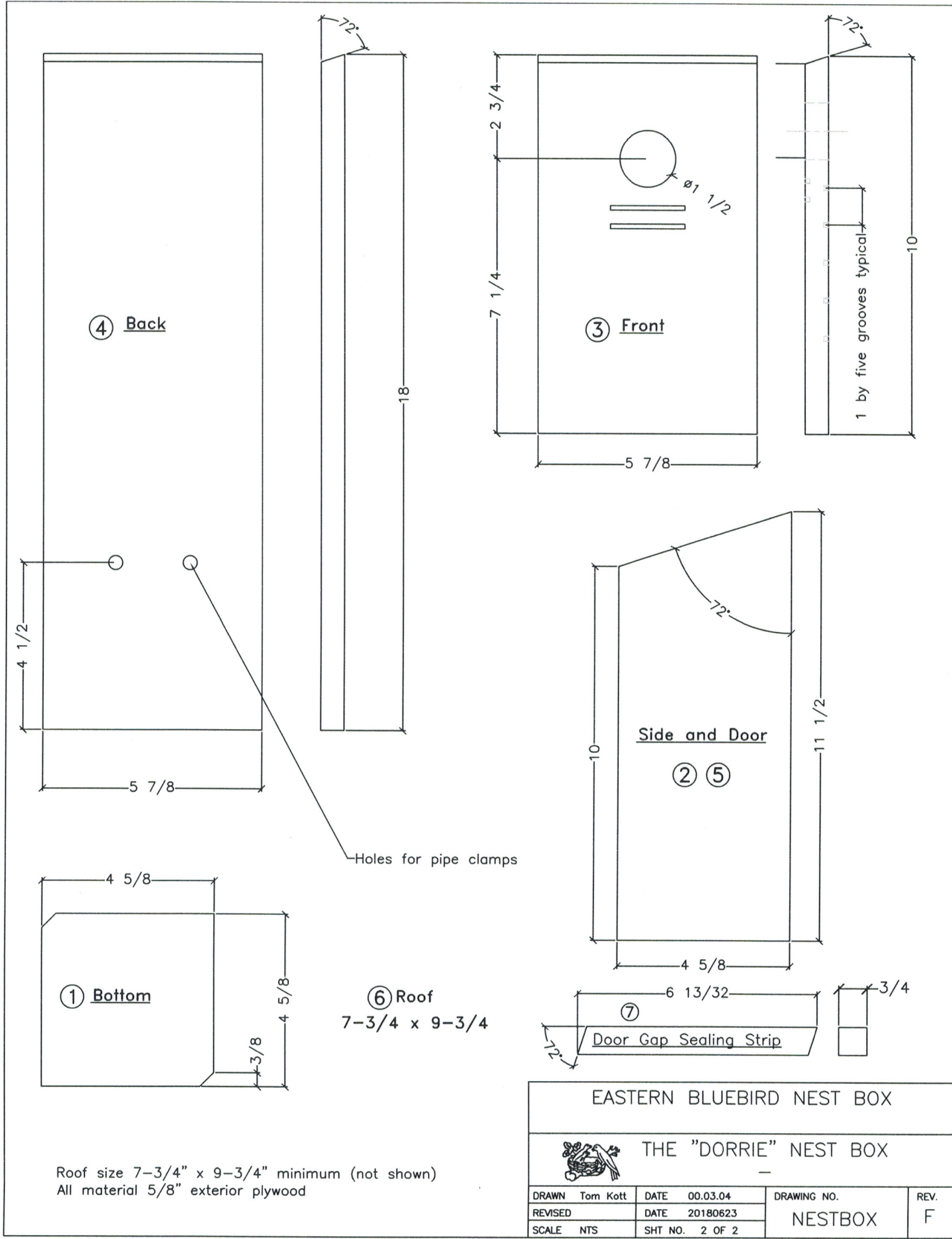
Plans provided by:
 Glanbrook Conservation Committee &
 the Ontario Eastern Bluebird Society


EASTERN BLUEBIRD NEST BOX

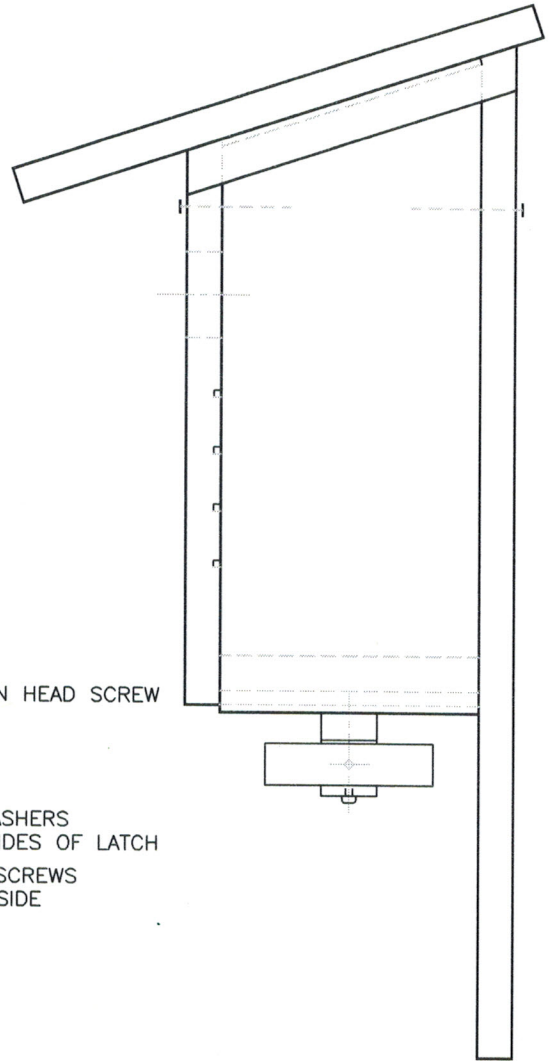
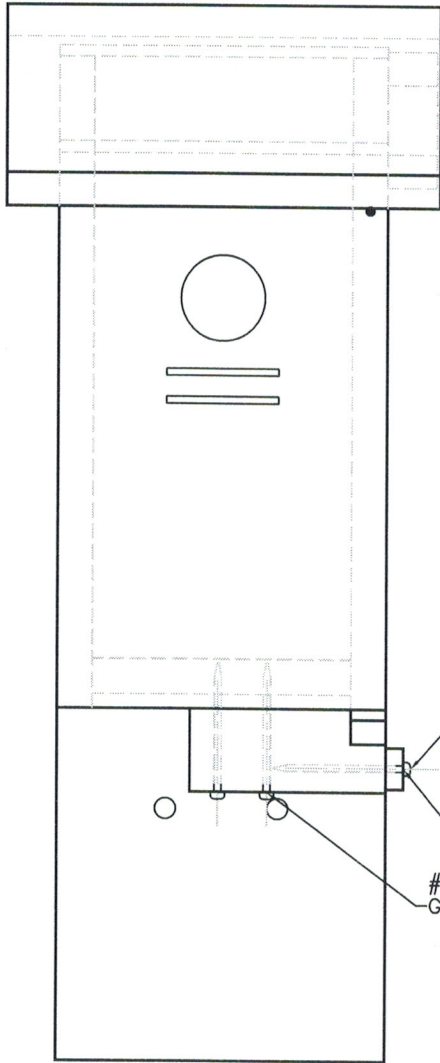


THE "DORRIE" NEST BOX

DRAWN Tom Kott	DATE 00.03.04	DRAWING NO.	REV.
REVISED	DATE 20180623	NESTBOX	F
SCALE NTS	SHT NO. 1 OF 2		



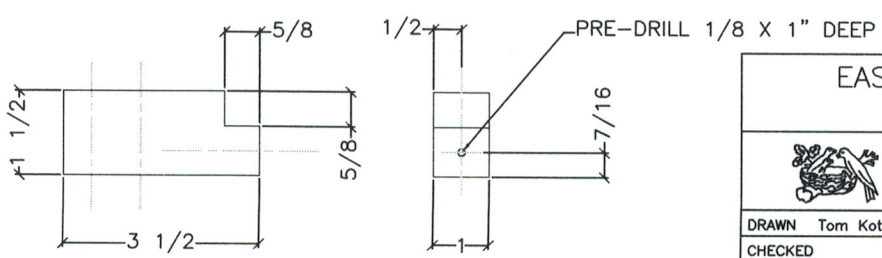
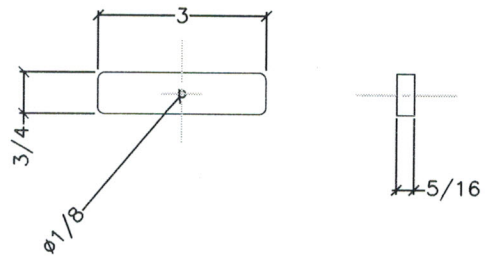
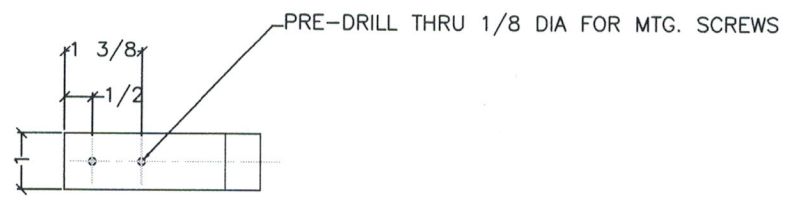
EASTERN BLUEBIRD NEST BOX			
 THE "DORRIE" NEST BOX			
DRAWN Tom Kott	DATE 00.03.04	DRAWING NO.	REV.
REVISED	DATE 20180623	NESTBOX	F
SCALE NTS	SHT NO. 2 OF 2		




#8 X 2 PAN HEAD SCREW
 #8 FLAT WASHERS
 ON BOTH SIDES OF LATCH
 #8 X 2" DECK SCREWS
 GLUE TO UNDERSIDE

LATCH (HARDWOOD)
 SAND ALL EDGES SMOOTH

LATCH MTG. BLOCK (SPRUCE)



EASTERN BLUEBIRD NEST BOX			
		THE "DORRIE" NEST BOX with "DON WILLS" latch	
DRAWN	Tom Kott	DATE	20180622
CHECKED		DATE	
SCALE	NTS	SHT NO.	1 OF 1
DRAWING NO.			REV.
NESTBOX			F