
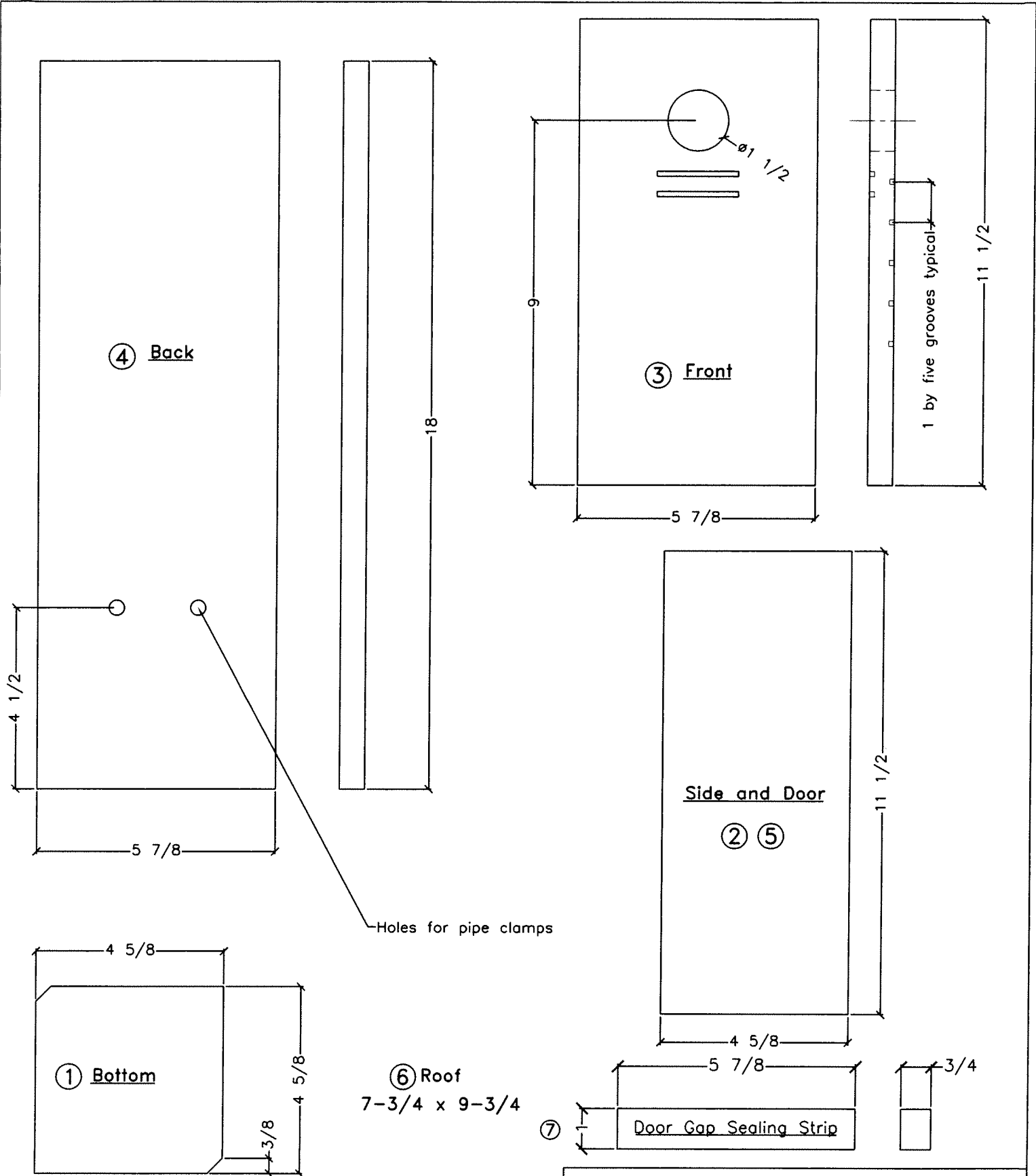


Notes:


- All material 5/8 exterior plywood
- Note location of grooves on part #3 (front)
- For more durability, glue and screw together
- Use #6x1-1/2 wood screws with exterior wood glue
- For door hinge pins use 1-1/2" ardox nails
- Use sand paper to remove any rough edges on the entrance hole
- Paint outside of box with an exterior latex paint (brown or grey)
- Do not paint the interior of the box
- Parts numbered in order of assembly
- Use a #8 x 1-1/4 wood screw to lock box door
- Box must be mounted on steel pipe or T post with predator guard
- Entrance hole faces S-E (in Ontario)
- Entrance hole approximately 1.83m (6ft) from ground

Parts numbered in order of assembly

EASTERN BLUEBIRD NEST BOX GLANBROOK CONSERVATION COMMITTEE			
		STANDARD TYPE	
DRAWN T. KOTT	DATE 00.03.04	DRAWING NO.	REV.
CHECKED	DATE	NESTBOX	A
SCALE NTS	SHT NO. 1 OF 1		



Roof size 7-3/4" x 9-3/4" minimum (not shown)
 All material 5/8" exterior plywood

EASTERN BLUEBIRD NEST BOX			
 STANDARD TYPE -			
DRAWN	T. KOTT	DATE	00.03.04
CHECKED		DATE	
SCALE	NTS	SHT NO.	1 OF 1
DRAWING NO.			REV.
NESTBOX			A